



MILLENNIUM5

**RIGID DUMP TRUCK AND ADT
PAYLOAD MONITORING SYSTEM**

**TECHNOLOGY CARVED
FOR THE TOUGHEST JOB**



RIGID DUMP TRUCK AND ADT ON BOARD WEIGHING TECHNOLOGY FOREFRONT

THE INSTALLATION OF ACCURATE AND EASY-TO-VIEW ONBOARD WEIGHING SOLUTIONS AND PRODUCTION MONITORING ENABLE FLEET OPERATORS TO CONTROL LOADS MOVED, DRIVING DOWN HAULAGE COSTS AND IMPROVING PRODUCTIVITY

Why equip your rigid dump truck or ADT with VEI Payload Monitoring?

- Load right on the spot
- Reduce truck wear on: tyres, transmission, engine & bodywork
- Production Monitoring in real time on your tablet, smart phone or PC
- Know beforehand the transported cost per ton
- Track loading efficiency
- Reduce fuel consumption by preventing overloading
- Worldwide factory trained support backup
- 3 years warranty, best in the industry



EASY TO OPERATE



EXTREME TESTING FOR SUPREME ACCURACY

All VEI products have undergone vigorous testing in order to ensure customer satisfaction and that all of the latest on-board application requirements are met. These accreditations assure product reliability over time and in harsh working conditions delivering superior quality, precision and therefore your fast return on investment.



DUST & SALT MIST



CLIMATIC TEST
-40°C ÷ +80°C

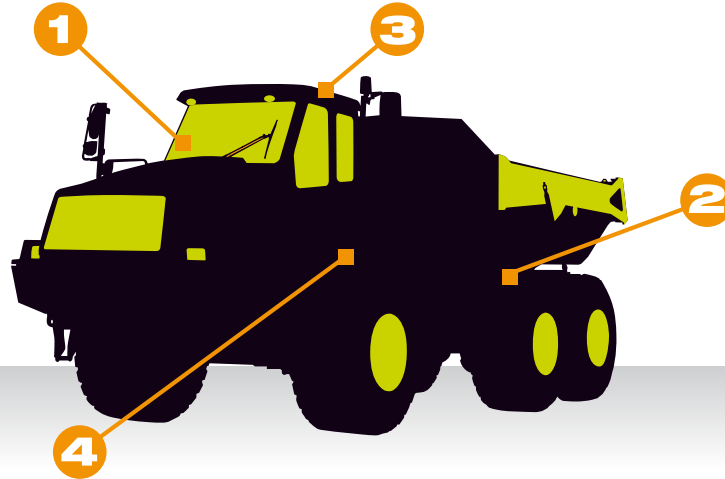


VIBRATION & SHOCK
40G



THE WEIGHING CONCEPT

Weighing is accomplished by sensing the axle deformation caused by the load being placed in the body. Our hi-tech, heavy duty sensors are installed in such a way so as to provide an accurate weight whilst loading and operating in the toughest of site conditions. "A simple solution providing outstanding results".



1

Onboard instrumentation

2

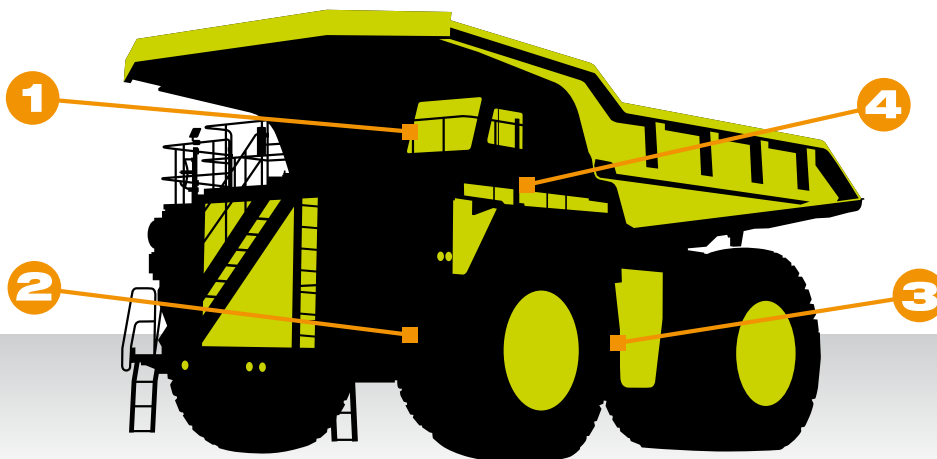
Two LoadLink sensors installed one each side of the truck chassis. They are small, easy to install and reliable over time.

3

Led light to indicate the load in progress

4

LCD Backlit Remote Display (70mm/3" number height)



1

Onboard instrumentation

2

Load sensor, one for each front suspension

3

Load sensor, one for each rear suspension

4

Led light to indicate the load in progress

4

LED Remote Display (250mm/10" number height)

PRODUCTION MONITORING TOOLS



With a built-in USB port as standard you can use a conventional memory stick to download the daily loading information, thereby avoiding additional costs. The data can then be read on a PC and viewed in a basic spreadsheet program similar to Excel.



Stay connected to your equipment 24/7, 7 days a week. Trackweight sends you real-time data from your equipment wherever you may be, all you need is an internet connection within your smart phone, tablet or PC.



Ideal in job sites where a WiFi network is existing. Your equipment will be part of the WiFi network in matter of minutes and loading data available at your preferred location in the job site and web wide.



Thermal high speed printing for your reporting on truck loads and production.

| | |
|-------------------------------------|------------|
| PORTLAND QUARRY | |
| 13 PEAK ROAD ROSKANK CITY OR | |
| LOADING SITE CREEK VALLEY QUARRY | |
| 04/20/2016 | 19:40 |
| DESTINATION CRUSHER 1 | |
| PRODUCT | WEIGHT (t) |
| COAL | 159,80 |
| 01 15:55:06 | 41,40 |
| 02 16:20:15 | 38,80 |
| 03 16:50:03 | 39,10 |
| 04 17:30:55 | 40,50 |
| DESTINATION CRUSHER 2 | |
| PRODUCT | WEIGHT (t) |
| OVERBURDEN | 149,30 |
| 01 17:55:06 | 37,00 |
| 02 18:23:15 | 38,50 |
| 03 19:00:03 | 36,30 |
| 04 19:36:55 | 37,50 |
| DAILY TOTAL | 309,10 |
| TONS/HOUR | 67,20 |
| Nr. of TRIPS | 8 |
| TICKET NUMBER | 350 |

ipotweb.com

PRODUCTION MONITORING SOFTWARE

Whether you use the USB or wireless data transfer, the production information ends up in a single database, from where it can be exported to where it's needed. Using ipotweb.com you can generate different types of reports, tracking down in real-time your inventory, production analysis and machine productivity. Ipotweb.com production data is available on your smartphone, tablet, or PC wherever you are.





HARDWARE CHARACTERISTICS

| | |
|-----------------------|---|
| Power Supply | 9÷36Vdc |
| Working Temperature | -40°C ÷ +80°C |
| Measurement Error (%) | 0 ± 3 |
| Shocks | 40G tested |
| Protection Class | Device IP 54. Sensors IP67 |
| Size | 140 x 204 x 67mm. (5,5 x 8 x 2,6 inches) |
| Weight | 928 gr (2 lb) |
| Display | HD color TFT |
| Light ambient sensor | day/night automatic display brightness |
| Keyboard | Membrane, lighted |
| Text editing | Mobile phone type |
| Modem port | RS232 |
| Printer port | RS232 |
| Remote keys | Open contact |

DATA TRANSMISSION

| |
|--------------------------------|
| Built-in USB data transfer |
| Trackweight cellular modem |
| Wifi modem |
| ipotweb.com web based software |

SOFTWARE FEATURES

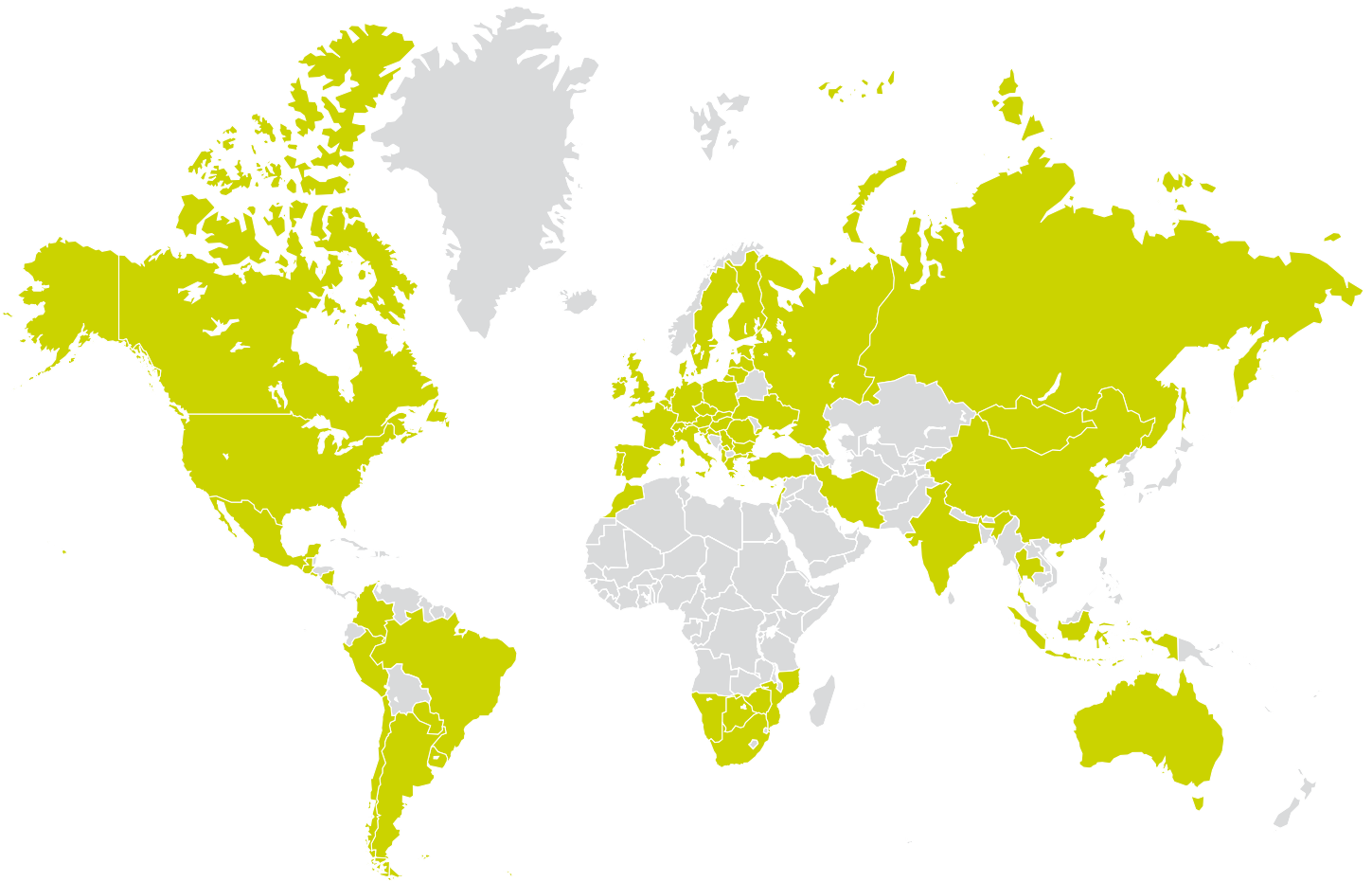
| |
|--------------------------|
| Unit of Mass conversion |
| Auto-Power On |
| Auto-Shutdown |
| Energy saving |
| USB files backup/restore |
| USB Software update |
| Operator ID login |
| Display Brightness setup |

DATA MANAGEMENT

| |
|--|
| Products |
| Destinations |
| Loading Company Name |
| Loading Site Name |
| Machine ID |
| Operator ID |
| Number of Trips |
| Date and Time stamp for each trip |
| Total transported by product and unloading point |
| Total Transported by day |
| Tons per hour |



WORLDWIDE NETWORK
53 TRAINED DISTRIBUTORS IN 60 COUNTRIES
THOUSANDS OF SYSTEMS INSTALLED
PROVIDING CUSTOMER SUPPORT AND ON-SITE TRAINING **SINCE 1986**



APPLICATIONS

VEI products can be installed on a variety of machines, working in different applications. In each one VEI products deliver superior accuracy to improve efficiency of the load-out, production processes, sales analysis, inventory updates and productivity. VEI scales can be easily transferred between machines of the same kind, are durable and **DESIGNED TO LAST**.



www.veigroup.com - info@veigroup.com

